

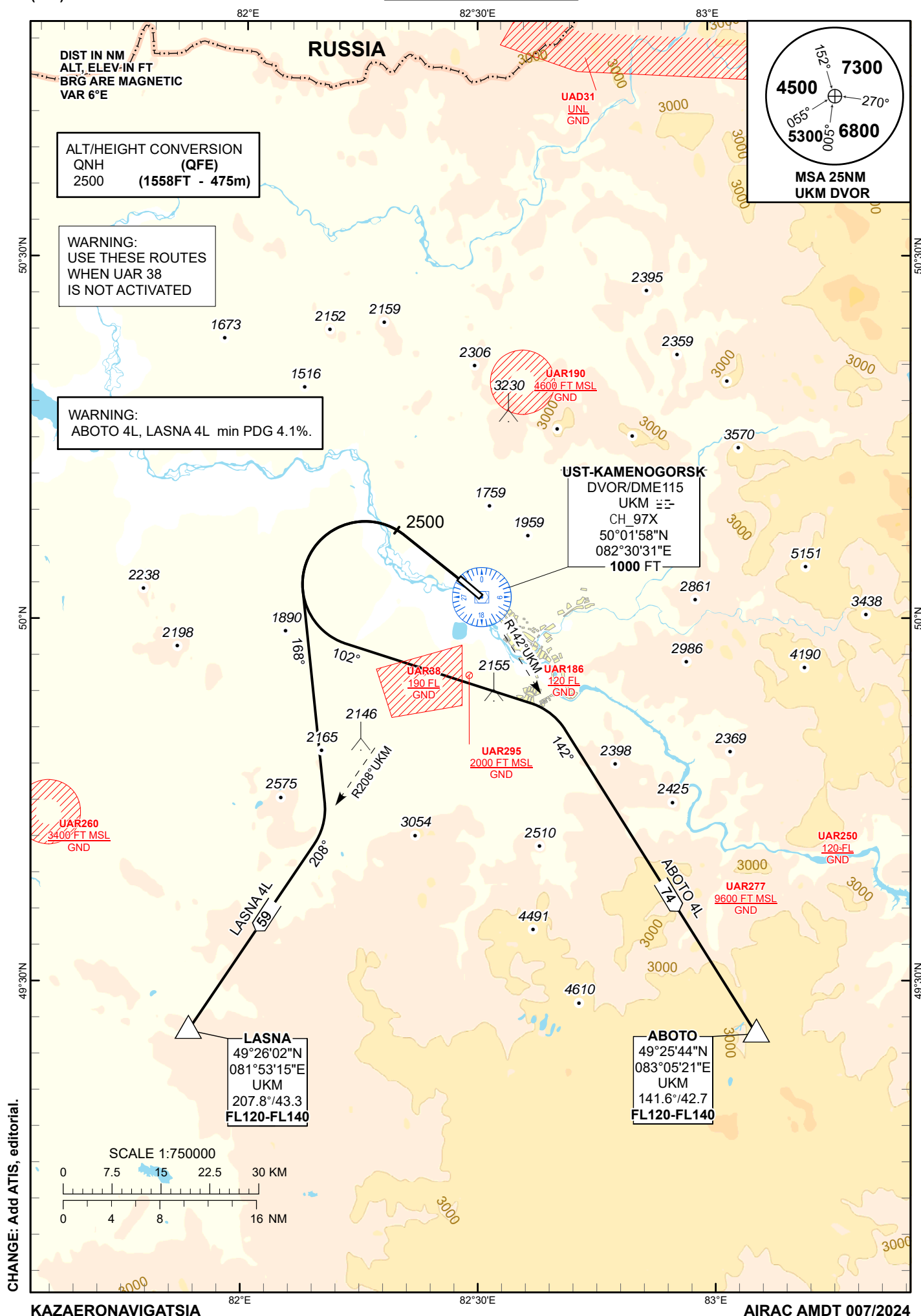
STANDARD DEPARTURE  
CHART - INSTRUMENT  
(SID) - ICAO

TRANSITION ALTITUDE  
10000 FT

UST-KAMENOGORSK TOWER 130.1  
UST-KAMENOGORSK ATIS (EN) 124.2  
UST-KAMENOGORSK ATIS (RU) 127.7

ABOTO 4L, LASNA 4L

UST-KAMENOGORSK  
RWY 30



**STANDARD DEPARTURE ROUTES – INSTRUMENT  
(SID) UST-KAMENOGORSK RWY 30**

**ABOTO 4L**

After take-off climb straight ahead to 2500 FT, turn LEFT on track 102° until intercept R 142° UKM, then proceed to ABOTO R 141.6° D 42.7 UKM.  
Cross ABOTO at FL120-FL140.

**LASNA 4L**

After take-off climb straight ahead to 2500 FT, turn LEFT on track 168° until intercept R 208° UKM, then proceed to LASNA R 207.8° D 43.3 UKM.  
Cross LASNA at FL120-FL140.